

Light efficiency:



Light quality:

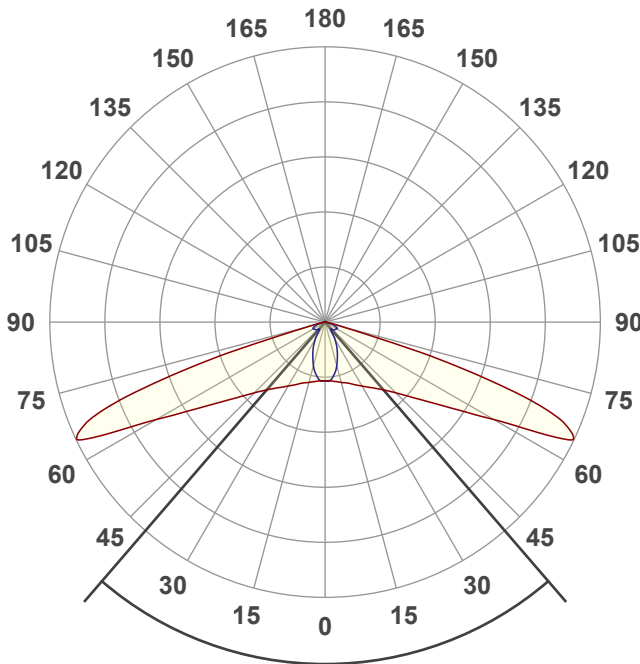
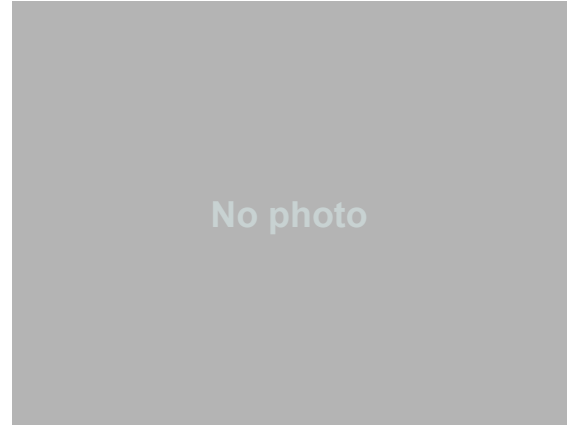


Color temperature:



Output: 425 lm
 Peak: 527 cd
 Power: 4,3 W
 PF: 0,62

4 PLANES



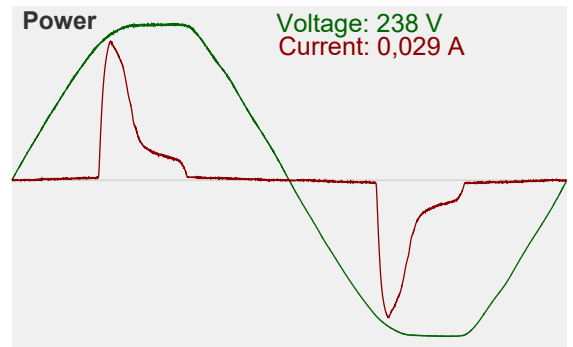
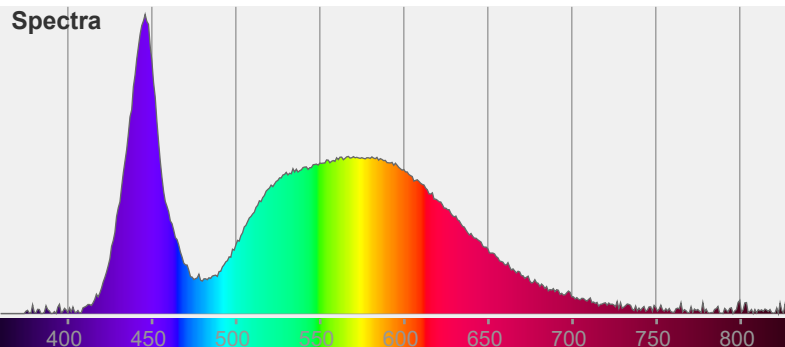
Beam angle

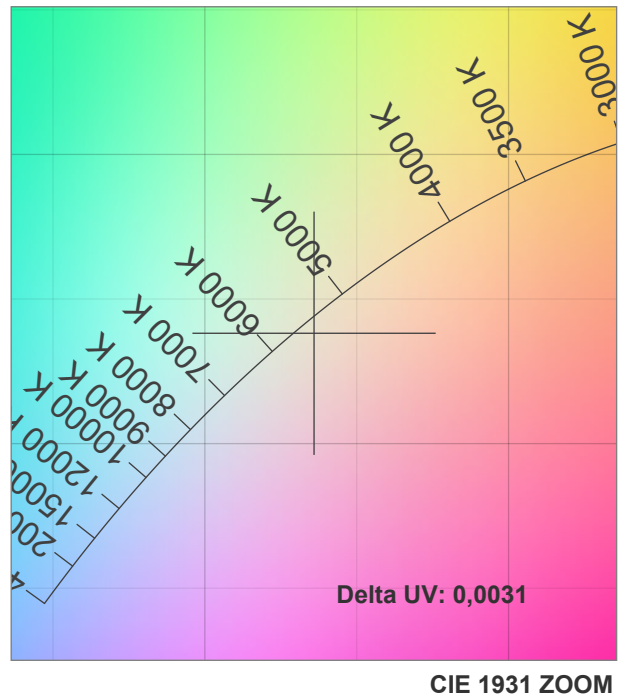
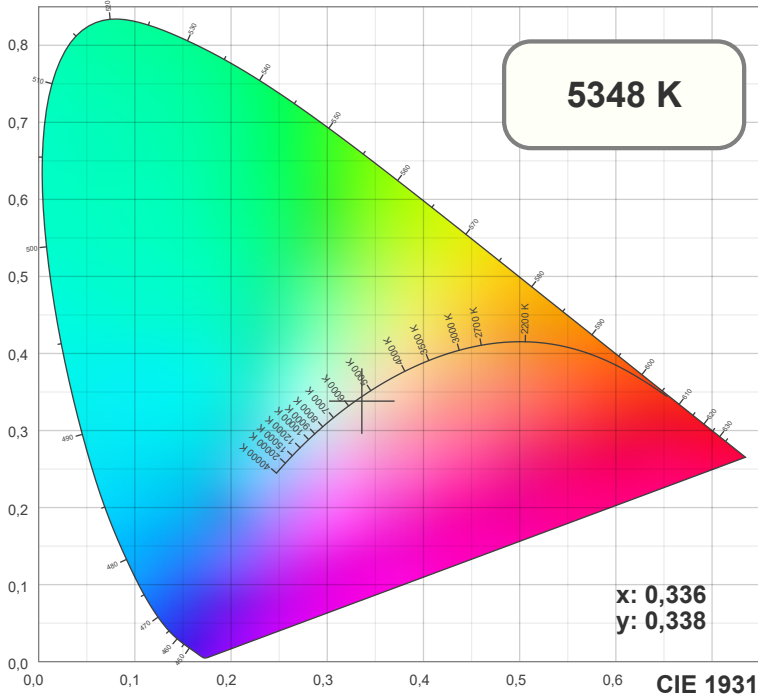
81,5°

Color



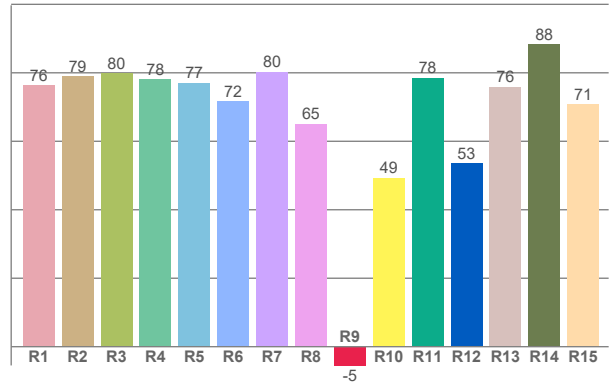
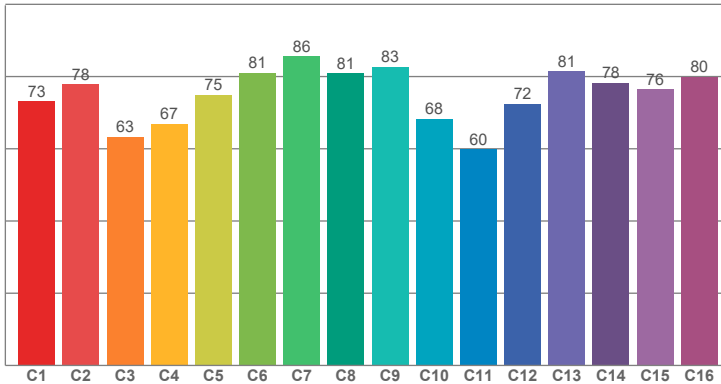
CIE1931
 x: 0,336
 y: 0,338





TM30: 74,4

CRI: 75,9 (R1-R8)



CRI R values, only R1-R8 are used to calculate final CRI value

R1	R2	R3	R4	R5	R6	R7	R8	R9	R10	R11	R12	R13	R14	R15
76,37	78,99	79,77	78,05	77,06	71,58	80,30	65,05	-5,47	49,31	78,49	53,46	75,85	88,39	70,87

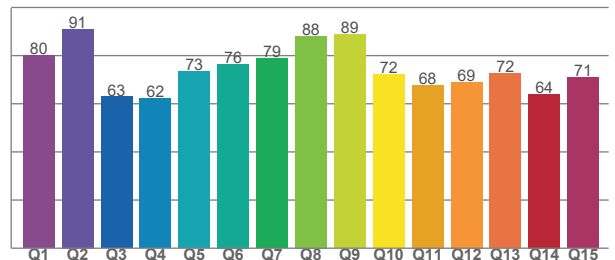
TM30 C values, 16 binned values out of total of 99 C values

C1	C2	C3	C4	C5	C6	C7	C8	C9	C10	C11	C12	C13	C14	C15	C16
73,20	77,86	63,26	66,96	75,01	81,05	85,59	80,95	82,71	68,35	59,85	72,49	81,48	78,26	76,47	79,86

CQS Q values

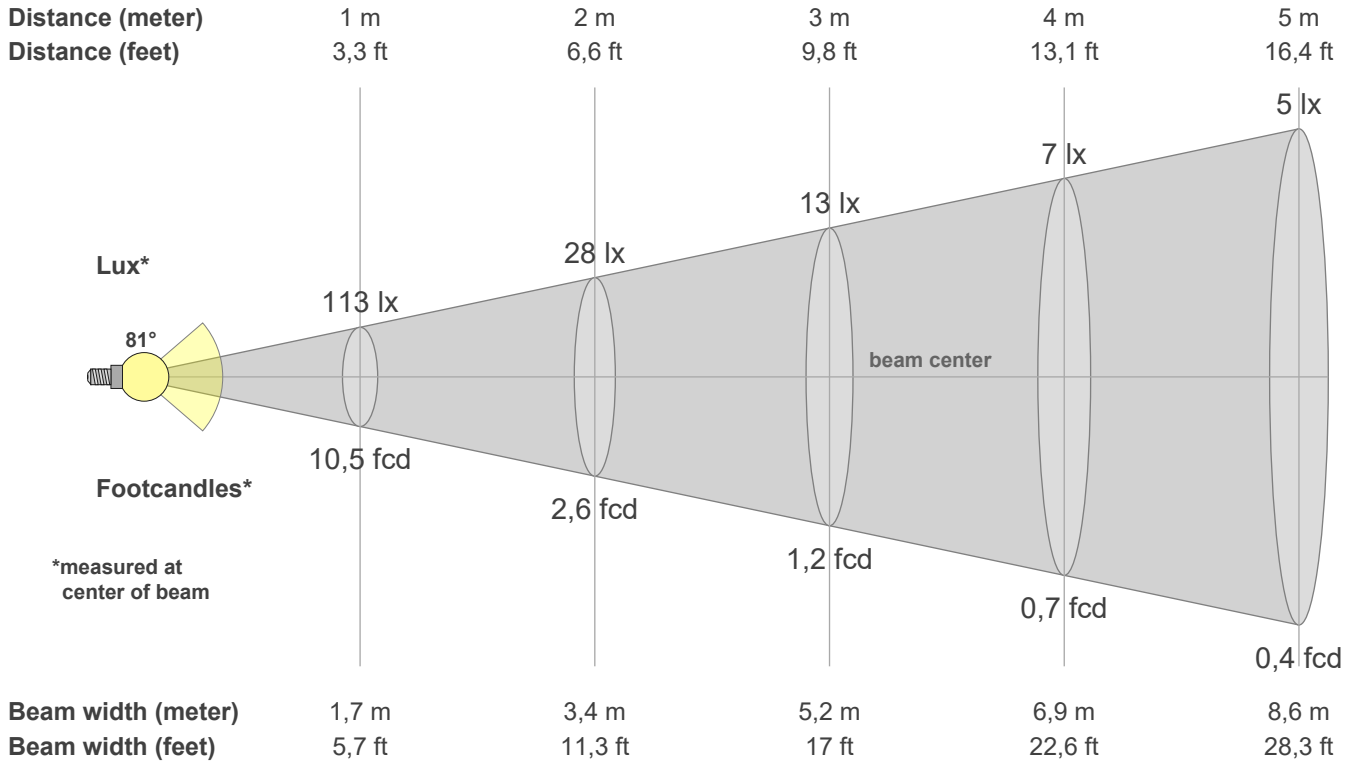
Q1	Q2	Q3	Q4	Q5	Q6	Q7	Q8	Q9	Q10	Q11	Q12	Q13	Q14	Q15
80,06	91,00	62,89	62,18	73,35	76,47	78,86	88,18	88,70	72,07	67,84	69,00	72,48	64,13	70,89

CQS: 73,0



Color parameters

CCT	CRI	CRI R9	TM30 Rf	TM30 Rg	CQS	x	y	u	v	Duv
5348 K	75,9	-5,5	74,4	98,9	73,0	0,3	0,3	0,2	0,3	-0,0063



Intensities in 0° c-plane

0°	5°	10°	15°	20°	25°	30°	35°	40°	45°	50°	55°	60°	65°	70°	75°	80°	85°	90°	95°
113	114	116	120	125	133	142	154	170	193	229	284	376	526	371	36	4	1	0	0
100%	100%	103%	106%	110%	117%	126%	136%	150%	170%	202%	251%	332%	465%	328%	32%	4%	1%	0%	0%

Intensities in 90° c-plane

0°	5°	10°	15°	20°	25°	30°	35°	40°	45°	50°	55°	60°	65°	70°	75°	80°	85°	90°	95°
113	113	102	87	69	54	38	20	19	20	23	24	26	25	19	8	2	1	0	0
100%	100%	90%	77%	61%	48%	34%	18%	17%	18%	21%	22%	23%	22%	17%	7%	2%	1%	0%	0%

Intensities in 180° c-plane

0°	5°	10°	15°	20°	25°	30°	35°	40°	45°	50°	55°	60°	65°	70°	75°	80°	85°	90°	95°
113	114	116	120	125	133	142	154	170	193	229	284	376	526	371	36	4	1	0	0
100%	100%	103%	106%	110%	117%	126%	136%	150%	170%	202%	251%	332%	465%	328%	32%	4%	1%	0%	0%

Intensities in 270° c-plane

0°	5°	10°	15°	20°	25°	30°	35°	40°	45°	50°	55°	60°	65°	70°	75°	80°	85°	90°	95°
113	113	102	87	69	54	38	20	19	20	23	24	26	25	19	8	2	1	0	0
100%	100%	90%	77%	61%	48%	34%	18%	17%	18%	21%	22%	23%	22%	17%	7%	2%	1%	0%	0%

Beam angle 50%	Field angle 10%	Cutoff angle 2,5%	Intensity ratio in 120° cone	Intensity ratio in 90° cone
81,5°	146,0°	158,1°	61,2%	35,1%